

Joint Vibration Analysis (JVA)

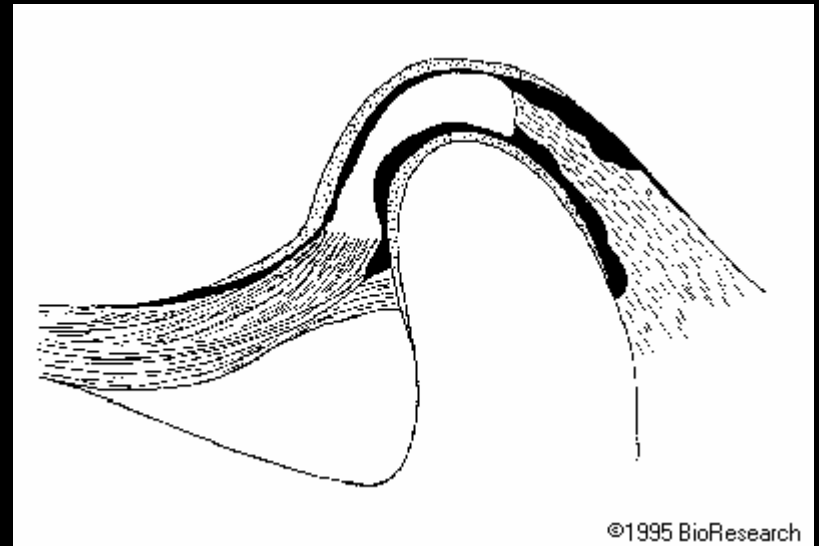


Fast, Non-invasive recording of vibrations that occur in the TMJ during movement or loading.

JVA can give the clinician a detailed description of TMJ function prior to appliance therapy and can be used to test the appliance's impact on TMJ health, prior to splint production.

Normal TMJ's

In their proper relationship, the condyle of the TMJ rests centrally in the fossa with the disk attached superior and slightly anterior to the head of the condyle.



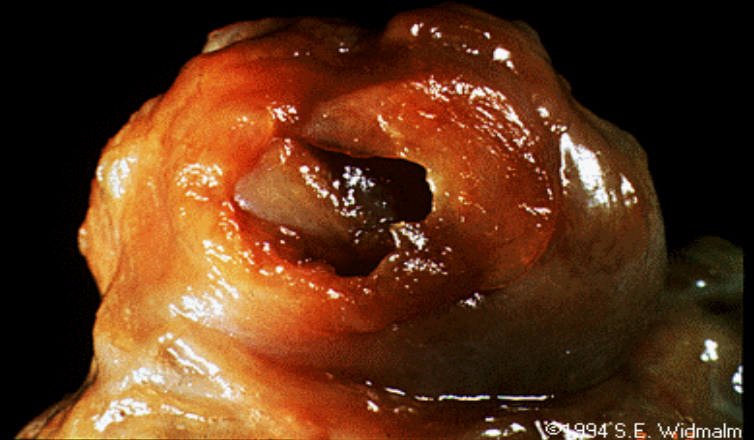
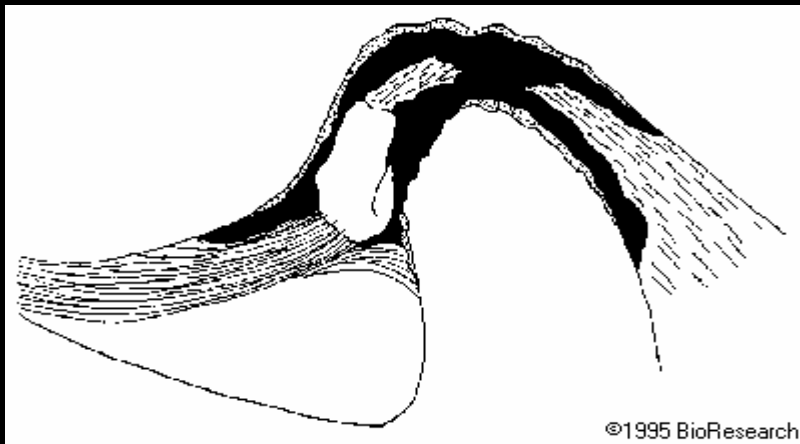
As the patient opens their mouth, the condyle simultaneously rotates and translates. The disk remains between the condyle and eminence to protect and cushion the bony structures. This movement creates very little friction/vibration



Video Courtesy of Palla et. al.

TMJ Pathology

There are many pathologies of the TMJ. These can include ligament injuries, displaced or moving disks, perforations, and degeneration.



Joint Vibration Analysis

- 3 minute
- Non-invasive
- Accurate
- Objective
- No recording of room noise (sounds)
- ADA Accepted

